

# Rutherford County North Carolina Chamber of Commerce

## DEMOGRAPHIC INFORMATION

July 2008 - 2009



*Distributed as a public service by  
The Rutherford County Chamber of Commerce  
162 North Main Street  
Rutherfordton, NC 28139  
Phone: (828)287-3090  
Fax: (828)287-0799  
[www.rutherfordcoc.com](http://www.rutherfordcoc.com)  
Email: [info@rutherfordcoc.com](mailto:info@rutherfordcoc.com)*



# 2007-2008 Rutherford County Demographic Information

---

---

## Contents Include:

Rutherford County's Largest Employers.....	2
Rutherford County - Overview.....	3
Population.....	4-5
Retail Sales.....	6
Miscellaneous Facts.....	7-10
Health Professionals.....	10
Rutherford County Taxes.....	11
Trend Profile.....	12
Trends Profile Map.....	13
Education.....	14-15
County Tourism Revenues.....	16
Climate.....	17
Agricultural Statistics.....	18
Forestry Facts.....	19
Data Sources.....	20-21

# Rutherford County's Largest Employers

Rank	Year	Period	Company Name	Industry	Employment Range
1	2007	03	Rutherford County Schools	Education & Health Services	1,000+
2	2007	03	Wal-Mart Associates Inc	Trade, Transportation, & Utilities	1,000+
3	2007	03	Acs Business Process Solutions Inc	Professional & Business Services	1,000+
4	2007	03	Rutherford Hospital Inc	Education & Health Services	500-999
5	2007	03	County Of Rutherford	Public Administration	500-999
6	2007	03	American Greetings Corporation	Information	250-499
7	2007	03	Hanesbrands, Inc	Manufacturing	250-499
8	2007	03	Isothermal Community College	Education & Health Services	250-499
9	2007	03	Watts Regulator Company (A Corp)	Manufacturing	250-499
10	2007	03	The Torrington Company	Manufacturing	250-499
11	2007	03	A G Industries Inc	Information	100-249
12	2007	03	Heritage Healthcare Inc	Education & Health Services	100-249
13	2007	03	Parker Hannifin Corporation	Trade, Transportation, & Utilities	100-249
15	2007	03	Afa Acquisition Corp	Manufacturing	100-249
15	2007	03	United Southern Industries Inc	Manufacturing	100-249
16	2007	03	Reeves Brothers Inc	Manufacturing	100-249
17	2007	03	Willow Ridge Of Nc Llc	Education & Health Services	100-249
18	2007	03	Ingles Markets Inc	Trade, Transportation, & Utilities	100-249
19	2007	03	Aeroquip Corp	Manufacturing	100-249
20	2007	03	Tanner Companies Limited	Trade, Transportation, & Utilities	100-249
21	2007	03	Rutherford Management Corp	Leisure & Hospitality	100-249
22	2007	03	All American Homes Of N. C., L.L.C.	Construction	100-249
23	2007	03	Rumbling Bald Resort	Leisure & Hospitality	100-249
24	2007	03	Cone Jacquards Llc	Manufacturing	100-249
25	2007	03	Town Of Forest City	Public Administration	100-249

NOTE: Preliminary date for the quarter ending Sept. 30, 2007

Source: Quarterly Census of Employment and Wages unite

[www.ncesc.com](http://www.ncesc.com)

# Rutherford County Overview

Forest City is Rutherford County's largest town and Rutherfordton is the county seat. Rutherford County has a total area of 565.27 square miles with 563.16 square miles of land area. The county's average maximum temperature is 70.5 degrees F and the average minimum temperature is 45.2 degrees F. The average rainfall is 50.34 inches. The county's lowest elevation is 806 ft. the highest is Sugar Loaf Mountain, 3965 ft.



# Rutherford County Population

<b>Total Population</b>	<b>62,899</b>	<b>American Indian &amp; Alaska Native</b>	<b>125</b>
White	54,592	Asian or Pacific Islander	206
Black or African American	7,066	Other	443
Hispanic or Latino	1,136	Two or More Races	467

Information is based on 2000 Census.

<b>Bostic</b>	
Total Population	328
Total Households	136
Average Household Size	2.41
Total Families	94
Average Family Size	2.95
Median Age	36.3

<b>Chimney Rock</b>	
Total Population	175
Total Households	74
Average Household Size	2.36
Total Families	51
Average Family Size	2.80
Median Age	38.3

<b>Ellenboro</b>	
Total Population	479
Total Households	222
Average Household Size	2.16
Total Families	126
Average Family Size	2.85
Median Age	38.4

<b>Forest City</b>	
Total Population	7,549
Total Households	3,245
Average Household Size	2.28
Total Families	2,028
Average Family Size	2.90
Median Age	37.8



<b>Lake Lure</b>	
Total Population	1,027
Total Households	495
Average Household Size	2.07
Total Families	360
Average Family Size	2.39
Median Age	58.6

<b>Ruth</b>	
Total Population	329
Total Households	137
Average Household Size	2.40
Total Families	97
Average Family Size	2.87
Median Age	38.9

<b>Rutherfordton</b>	
Total Population	4,131
Total Households	1,602
Average Household Size	2.33
Total Families	1,048
Average Family Size	2.91
Median Age	40.3

<b>Spindale</b>	
Total Population	4,022
Total Households	1,662
Average Household Size	2.29
Total Families	1,065
Average Family Size	2.87
Median Age	38.4

# Rutherford County Population (continued)

General Demographic Characteristics	
Total population	62,899
Male	30,301
Female	32,598
Median Age	38.3
Under 5 years	3,887
18 years and over	47,939
65 years and over	10,067

Projected Population	
July 2007	63,847
July 2008	64,155
July 2009	64,483
July 2010	64,792
July 2011	65,002

Projected State & County Density		
	Rutherford County	North Carolina
Land Area (Sq. Mile)	564.12	48,710.88
April 2000	111.50	165.20
July 2005	114.14	178.81
April 2010	118.96	193.83
July 2015	123.40	209.30
April 2020	128.00	224.67

Information based on 2000 Census

# Retail Sales 2006-2007

County & Major Business Group	Gross Collections *	Taxable Sales **
<b>RUTHERFORD</b>	<b>17,255,586</b>	<b>396,327,926</b>
1% Tax	6,325	625,079
2% and 3% Tax	255,068	10,102,293
Apparel	569,619	12,965,895
Automotive	1,242,457	28,172,990
Food	4,506,502	101,848,729
Furniture	485,632	11,000,712
General Merchandise	5,799,667	132,049,529
Lumber & Building Material	2,437,066	55,435,233
Unclassified	1,953,249	44,127,466

\* Gross collections reported during the period July 1 through June 30 including collections of penalties, interest, and sales and use tax.

\*\* Amounts shown are total taxable sales reported on sales and use tax returns filed during the period July 1 through June 30. The returns received reflect sales for the period June 1 through May 31.

## Monthly Retail Sales

Month	Gross Collection	Taxable Sales
February 2008	1,631,920	38,623,971
January 2008	1,492,922	35,351,348
December 2007	1,511,501	35,567,854
November 2007	1,288,636	30,745,464
October 2007	867,629	20,727,447

# Miscellaneous Facts

Commuting Patterns		Current Industry Structure		
Commuting Out of Rutherford County			Number of Units	Employment
Destination County	Number of Workers			
Cleveland County	1,988	Total, All Industries	1,377	22,620
Mecklenburg County	412	Natural Resources & Mining	15	92
McDowell County	348	Construction	182	1,314
Spartanburg County	883	Manufacturing	79	3,972
Cherokee, SC	312	Trade, Transportation & Utilities	336	4,663
Other Areas	23,711	Information	16	881
Commuting Into Rutherford County		Financial Activities	122	515
Origin County	Number of Workers	Professional & Business Services	144	2,236
Cleveland County	980	Education & Health Services	153	5,306
Polk County	645	Leisure & Hospitality	127	2,018
McDowell County	276	Other Services	72	245
Spartanburg, SC	266	Public Administration	30	1,266
Henderson	159	Unclassified	101	112
Other Areas	22,379			

Civilian Labor Force Estimates						
	Jan	Feb	Mar	Apr	May	June
LaborForce	29995	29734	29821	30100	N/A	N/A
Employed	28045	27806	27950	28224	N/A	N/A
Unemployed	1950	1928	1871	1876	N/A	N/A
Rate%	6.5	6.5	6.3	6.2	N/A	N/A

Average Weekly Wage	Rutherford County	North Carolina
	\$550	\$719

# Miscellaneous Facts (continued)

Income & Poverty	
Median Household Income 2004	\$32,774
Per Capita Income 2000	\$16,270
Median Family Income	\$37,787
Persons Below Poverty	16.1%

Land and Water Area in Square Miles	
Land area, 2000 (square miles)	564.1
Water area, 2000 (square miles)	1.8
Total Area	565.9

Other Facts	
Property Tax Rate	\$0.62
Ability to Pay	22
Voting Rate	62.1%

Housing	
Median Housing Value	\$77,600
Median Gross Rent	\$404
Average Mortgage (2003)	\$92,178
Median Monthly Cost for Owning a Home (200)	16.7%
Persons Per Household (2000)	2.44

Highway Accessibility		
Route	Distance	Direction
US 74	Local	East & West
US 64	Local	East & West
Hwy 221	Local	North & South
I - 26	20 Miles	East & West
I - 40	21 Miles	East & West
I - 85	26 Miles	North & South

Rutherford County is located:
1.7 Miles from Spindale
5.7 Miles from Forest City
6.8 Miles from Bostic
11.5 Miles from Ellenboro
14.6 Miles from Lake Lure
17 Miles from Chimney Rock
62 Miles from Charlotte, NC
52 Miles from Asheville, NC
42 Miles from Greenville, SC
32 Miles from Spartanburg, SC



## Miscellaneous Facts (continued)

Crime Statistics		
	2006	2007
Violent Crime	150	N/A
Murder/Manslaughter	3	N/A
Rape	19	11
Robbery	17	18
Aggravated Assault	111	102
Property Crime	874	N/A
Burglary	383	440
Larceny - Theft	401	690
Motor Vehicle Theft	90	82
Arson	17	N/A

- ◆ Rutherford County is 563 sq. miles
- ◆ The county seat is Rutherfordton which is 2.6 sq. miles
- ◆ The City of Spindale is 4.62 sq. miles
- ◆ The City of Forest City is 10.6 sq. miles.

- ◆ Rutherford County, 563 sq. miles. The county is composed of eight municipalities: Bostic, Chimney Rock, Ellenboro, Forest City, Rutherfordton, Ruth, Spindale and Lake Lure. Connected by US Hwy. 74-Business, Rutherfordton, Spindale and Forest City form the Tri-City area. The towns of Lake Lure and Chimney Rock are located approximately 20 miles west of Rutherfordton. Lake Lure is a 1,500 acre municipal lake with 27 miles of shoreline and a public beach access.
- ◆ Rutherfordton, 1075 ft.; Spindale, 960 ft.; Forest City, 860 ft. County's lowest elevation - Caroleen, 806. County's highest elevation - Sugar Loaf, 3,967 ft.
- ◆ In North Carolina, the state levies a general retail sales and use tax of 4.25 percent (which is scheduled to decrease to 4 percent effective July 1, 2007). Most counties levy 2.5 percent local sales and use tax on items taxed by the state at its general rate. As a result, the combined general state and county tax rate is 6.75 percent in all counties except Mecklenburg County, which has a rate of 7.25 percent due to a 0.5 percent public transit tax.
- ◆ Rutherford County is considered a rural county with abundant open space, natural forests, lakes and farm land. The county is composed of eight municipalities: Bostic, Chimney Rock, Ellenboro, Forest City, Rutherfordton, Ruth, Spindale and Lake Lure. The towns of Lake Lure and Chimney Rock are located approximately 20 miles west of Rutherfordton. Lake Lure is a private lake with public access that is enjoyed by thousands from spring until fall.

## Miscellaneous Facts (continued)

Labor Force & Employment							
% Working Age Population	Female Labor Force Rate	%Working in Manu.	Avg. Wage for Manu.	% Professionals	% Working in Production	%Working in Sales	Announced Layoffs or Business Closings 2006
60.2%	52.7%	22.6%	\$30,945	21.7%	29.5%	21.1%	105

## 2006 Active Health Professionals

<b><i>Physicians</i></b>	
Non-Federal Physicians	85
Primary Care Physicians	47
<i>Family Practice</i>	17
<i>General Practice</i>	1
<i>Internal Medicine</i>	16
<i>Obstetrics/ Gynecology</i>	5
<i>Pediatrics</i>	8
Other Specialties	38
Physicians per 10,000 Population	13.5
Primary Care Physicians Per 10,000 Population	7.4

<b><i>Dentists and Dental Hygienists</i></b>	
Dentists	16
Dental Hygienists	42

<b><i>Nurses</i></b>	
Registered Nurses	444
<i>Nurse Practitioners</i>	7
<i>Certified Nurse Midwives</i>	1
Licensed Practical Nurses	201

<b><i>Other Health Professionals</i></b>	
Chiropractors	9
Occupational Therapists	5
Occupational Therapy Assistant	6
Optometrists	6
Pharmacists	45
Physical Therapists	14
Physical Therapist Assistants	14
Physician Assistants	13
Podiatrists	1
Practicing Psychologists	4
Psychological Associates	8
Respiratory Therapists	20

# Rutherford County Taxes

Assessed Value of Taxable Property For the last five fiscal years (In thousands)				
Fiscal Year Ended June 30	Real Property	Personal Property	Public Service Companies	Total
2005	\$2,955,234	\$752,427	\$244,833	\$3,952,494
2004	\$2,879,335	\$768,594	\$252,769	\$3,900,698
2003	\$2,824,379	\$862,859	\$242,451	\$3,929,689
2002	\$2,181,264	\$844,710	\$185,699	\$3,211,673
2001	\$2,099,696	\$828,745	\$205,748	\$3,134,189

Rutherford County Tax Rate 2007*	
Rutherford County	\$0.53
Bostic	\$0.25
Chimney Rock Village	\$0.075
Ellenboro	\$0.22
Forest City	\$0.29
Lake Lure	\$0.21
Ruth	\$0.26
Rutherfordton	\$0.52
Spindale	\$0.51

All real and personal property is taxed in Rutherford County and must be listed in January. Contact the Rutherford County Tax Supervisor at 287-6180 for more information.

**2007 is the latest revaluation of county taxes**

Special Districts	
County Contracted	\$0.02
Bills Creek Fire	\$0.08
Bostic Fire	\$0.05
Cherry Mountain Fire	\$0.09
Chimney Rock Fire	\$0.04
Cliffside Fire	\$0.07
Cliffside Sanitary	0.08
Ellenboro Fire	\$0.06
Green Hill Fire	\$0.07
Hollis Fire	\$0.03
Hudlow Fire	\$0.08
Sandy Mush Fire	\$0.04
SDO Fire	\$0.05
Shingle Hollow	\$0.10
Rutherfordton Fire	\$0.08
Union Mills Fire	\$0.05

<i>Fees</i>	
Solid Waste Fee (SWW)	\$100.00
Solid Waste Fee (SWH)	\$ 25.00
Ellenboro Waste Tax (WF3)	\$ 50.00
Ruth Waste Fee (WF6)	\$ 25.00
Chimney Rock WF (WF9)	\$100.00

# Rutherford County (NC)

## 2nd Quarter 2008



County Profile Contact (919) 715-6374

Commerce Economic Development Contact (919) 733-4977

### Demographics

#### Population & Growth

	Population	Annual Growth Rate
2012 Total Population	66,255	0.4%
2007 Total Population	65,027	0.5%
2000 Total Population	62,899	
July 2006 Certified Population Estimate	63,177	
July 2006 Certified Population Growth	143	
July 2006 Certified Net Migration	133	

#### Urban/Rural Representation

		Urban/Rural Percent
2000 Total Population: Urban - inside Urbanized Area	0	0.0%
2000 Total Population: Urban - inside Urbanized Clusters	23,242	37.0%
2000 Total Population: Rural - Farm	836	1.3%
2000 Total Population: Rural - Nonfarm	38,821	61.7%

#### Estimated Population by Age

		Pop by Age, % Est.
2012 Median Age	42	
2007 Median Age	40	
2000 Median Age	38	
2007 Total Pop 0-19	16,108	24.8%
2007 Total Pop 20-29	7,369	11.3%
2007 Total Pop 30-39	9,001	13.8%
2007 Total Pop 40-49	9,412	14.5%
2007 Total Pop 50-59	8,985	13.8%
2007 Total Pop 60+	14,152	21.8%

### Working Commuters, 2000 Census

#### Workers, Travel Time

Avg Travel Time, Not at Home	22
Workers Not Working at Home	26,967
Travel Time to Work: < 5 minutes	1,165
Travel Time to Work: 5-9 minutes	3,089
Travel Time to Work: 10-14 minutes	5,203
Travel Time to Work: 15-19 minutes	5,410
Travel Time to Work: 20-24 minutes	3,805
Travel Time to Work: 25-29 minutes	1,500
Travel Time to Work: 30-34 minutes	2,925
Travel Time to Work: 35-39 minutes	549
Travel Time to Work: 40-44 minutes	512
Travel Time to Work: 45-59 minutes	1,270
Travel Time to Work: 60-89 minutes	922
Travel Time to Work: 90+ minutes	617

#### Workers, By Transportation

Worker Mode, Base	27,673
Work at Home	706
Drove Car/Truck/Van Alone	22,709
Carpooled Car/Truck/Van	3,591
Bus/Trolley Bus	18
Streetcar/Trolley Car	0
Subway/Elevated	0
Railroad	0
Ferryboat	0
Taxicab	18
Motorcycle	0
Bicycle	17
Walked	448
Other Means	166

<b>Travel to Work</b>	<b>Commuters</b>	<b>Percent by Residence</b>
Worked in State/County of Residence	21,812	78.8%
Worked in State/Outside County of Residence	4,260	15.4%
Worked Outside State of Residence	1,601	5.8%

## Education

		<b>Pop Age 25+, %</b>
2007 Average SAT score	1413	
2007 Percent of Graduates taking SAT	45%	
2005-06 Higher Education Completions	376	
2005-06 Higher Education Total Enrollment	.	
2000 Education Attainment - At Least High School Graduate	30,190	70.4%
2000 Education Attainment - At Least Bachelor`s Degree	5,344	12.5%

## Housing

		<b>Growth / Appreciation Est</b>
2012 Total Housing	33,094	4.1%
2007 Total Housing	31,803	
2012 Median Value of Owner Occupied Housing	124,863	18.2%
2007 Median Value of Owner Occupied Housing	105,603	
2007 Owner Occupied Housing	20,145	
2007 Renter Occupied Housing	6,444	
2007 Total Households	26,589	
2000 Median Year Housing Structure Built	1,974	

## Income

		<b>Growth Estimated</b>
2012 Median Family Income	\$51,636	13.1%
2007 Median Family Income	\$45,647	21.1%
2000 Median Family Income	\$37,709	
2012 Median Household Income	\$42,268	12.8%
2007 Median Household Income	\$37,456	20.0%
2000 Median Household Income	\$31,207	
2007 Median Disposable Income	\$30,549	
2007-2012 Per Capita Income: Annual Compound Growth Rate %		2.8%
2012 Per Capita Income	\$22,858	14.7%
2007 Per Capita Income	\$19,932	22.5%
2000 Per Capita Income	\$16,270	
2000 Total Pop with Income Below Poverty Level	8,513	
2000 Percent of Pop with Income Below Poverty Level	13.9%	

## Employment / Unemployment

	<b>Year to Date</b>	<b>2007 Annual</b>
Employment (YTD2008Q1)	27,940	28,634
Unemployment (YTD2008Q1)	1,920	1,944
Unemployment Rate (YTD2008Q1)	6.4%	6.4%
Announced Job Creation (YTD2008Q1)	.	159
Total Announced Investments (\$mil)(YTD2008Q1)	.	\$11
Lost Jobs, Closings & Layoffs (YTD2008Q2)	.	2
Establishment Events, Closings & Layoffs (YTD2008Q2)	1	1

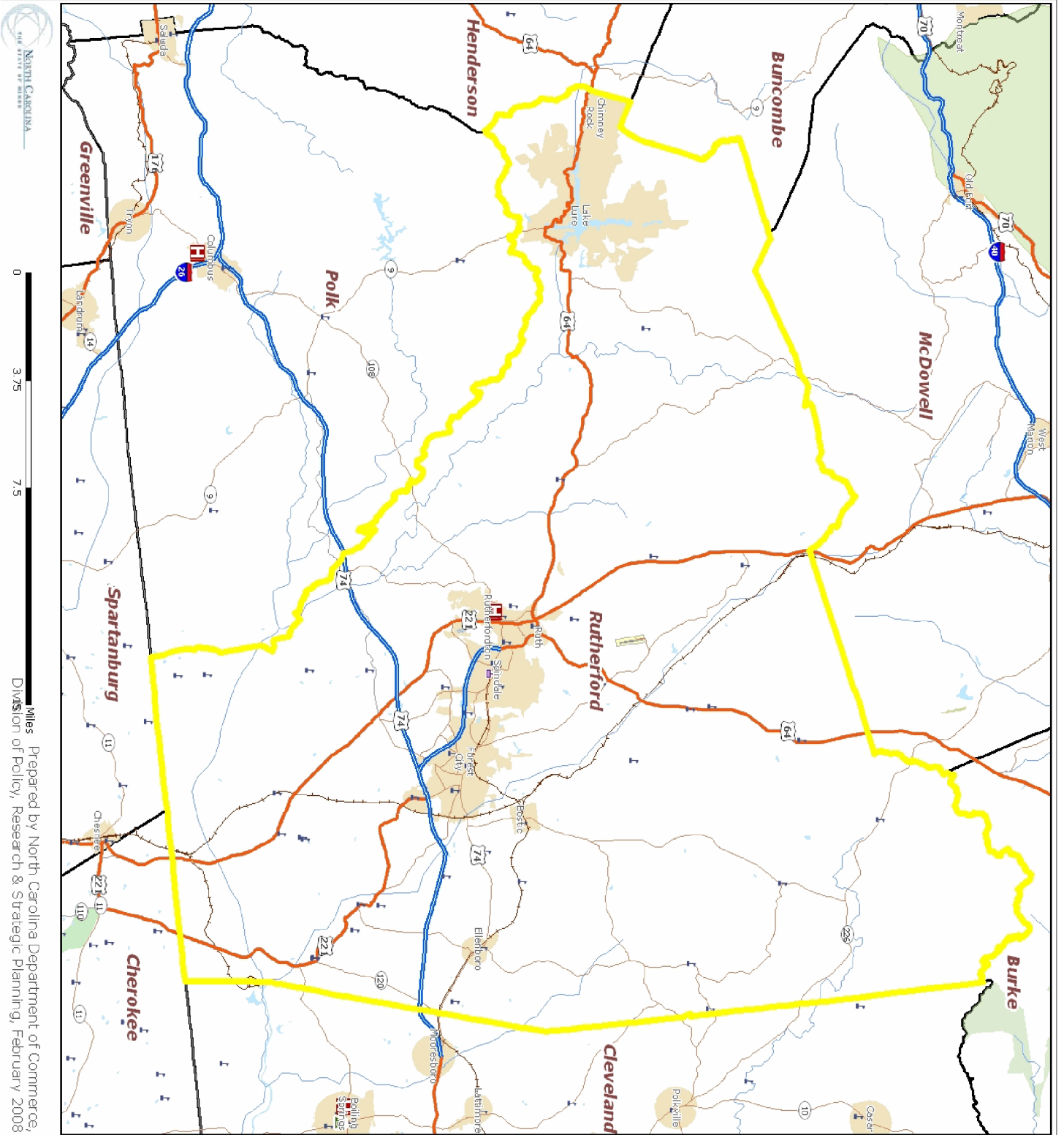
<b>Employment / Wages by Industry</b>	<b>2007 3rd Qtr Employment</b>	<b>2006 Annual Employment</b>	<b>2007 3rd Qtr Avg Weekly Wage</b>	<b>2006 Avg Weekly Wage</b>
Total All Industries	20,355	19,963	\$542	\$536
Total Government	1,806	2,009	\$694	\$584
Total Private Industry	18,548	17,954	\$527	\$522
Agriculture Forestry Fishing & Hunting	0	0	.	.
Mining	0	0	.	.
Utilities	0	0	.	.
Construction	1,327	1,307	\$595	\$561
Manufacturing	3,969	4,049	\$723	\$654
Wholesale Trade	0	0	.	.
Retail Trade	2,434	2,642	\$398	\$420
Transportation and Warehousing	1,508	1,504	\$566	\$595
Information	882	919	\$482	\$529
Finance and Insurance	360	325	\$653	\$659
Real Estate and Rental and Leasing	155	187	\$407	\$500
Professional and Technical Services	1,540	1,026	\$434	\$459
Management of Companies and Enterprises	99	145	\$985	\$644
Administrative and Waste Services	592	593	\$377	\$343
Educational Services	1,618	1,820	\$689	\$588
Health Care and Social Assistance	3,299	3,004	\$575	\$559
Arts, Entertainment and Recreation	366	319	\$392	\$383
Accommodation and Food Services	1,643	1,606	\$234	\$221
Other Services Ex. Public Admin	243	239	\$432	\$405
Public Administration	215	202	\$696	\$663
Unclassified	105	76	\$393	\$374

## Quality of Life

<b>Taxes</b>		<b>Childcare</b>	
FY2007-08 Property Tax Rate per \$100 Value	\$0.53	May 2008 Licensed Child Care Facilities	63
FY2006-07 Annual Taxable Retail Sales (\$mil)	\$396.3	May 2008 Licensed Child Care Slots	3,302
2008 Tier designation	1		
<b>Weather</b>		<b>Healthcare Providers</b>	
Annual Rainfall	49	2006 Number of Physicians	85
Annual Snowfall	8	2006 Physicians per 10,000 population	14
Average Annual Temperature	62	2006 RNs per 10,000 population	70
Average Annual High Temperature	71	2006 Dentists per 10,000 population	3
Average Annual Low Temperature	49	2006 Pharmacists per 10,000 population	7
<b>Commercial/Retail/Industrial</b>		<b>Local Retail Business</b>	
2008 Available Industrial Buildings	36	2007 Total Retail Sales (With Food/Drink) (\$mil)	\$487.0
2006 Establishments: Total Private Industry	2,517	2007 Total Retail Businesses (With Food/Drink)	559
2006 Establishments: Manufacturing	83	2007 Avg Household Retail Demand (Food/Drink) (\$)	\$20,998

Sources:  
ESRI for demographics, working population, educational attainment, housing, income, crime, weather, and retail data. <http://www.esri.com>  
NC Dept. of Education and various state education departments for SAT data by county system. <http://www.ncpublicschools.org>  
US Dept. of Education, National Center for Education Statistics for higher education data. <http://nces.ed.gov/ipeds/>  
NC Commerce for announced new jobs and investment, NC tiers, and number of industrial buildings. <http://www.nccommerce.com/en>  
NC Employment Security Commission for lost jobs and affected establishments data. <http://www.ncesc.com>  
NC Dept. of Health & Human Services for childcare data. <http://www.ncdhhs.gov/>  
UNC Sheps Center for healthcare provider statistics. <http://www.shepscenter.unc.edu/>  
US Bureau of Labor Statistics for employment and unemployment, wages and establishments by industry. <http://www.bls.gov>

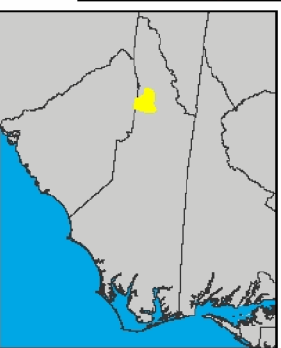
Notes:  
Data are the latest available at the date the profile was prepared. SAT scores use the new scoring system including a writing test for a perfect score of 2400 and represent county systems. ESRI 2007/2012 data are projections. Some data may be available only for North Carolina. For further details or questions, please check the Data Sources Guide at <https://edis.commerce.state.nc.us/docs/bibliography/dataGuide.htm>.



Prepared by North Carolina Department of Commerce,  
Division of Policy, Research & Strategic Planning, February 2008

**Legend**

- Hospital
- Public University
- Private University
- NC Community Colleges
- School
- Limited Access
- Highway
- Major Road
- Local Road
- Minor Road
- Other Road
- Ramp
- Ferry
- Pedestrian Way
- Railroads (Local)
- Airport Area
- Stream
- Intermittent Stream
- Canal
- Dam
- National Park or Forest
- State Park or Forest
- Local Park or Recreation Area
- Municipal Boundaries



# Rutherford County Schools (School year 06 - 07)

## Rutherford County Schools

John Kinlaw, Superintendent  
382 West Main Street  
Forest City, NC 28043  
(828) 245-0252

## District Profile

**School Size** - The average number of students in an elementary (K-5), middle (6-8), and high (9-12) school in this district and the state.

	District	State
Elementary	465	510
Middle	740	666
High	741	989

## Average Class Size

The average number of students enrolled in "typical" K-8 classrooms.

	District	State
Kinder-garten	20	19
Grade 1	20	19
Grade 2	20	19
Grade 3	20	19
Grade 4	19	20
Grade 5	20	21
Grade 6	19	21
Grade 7	21	21
Grade 8	21	20

## Financial Support

**Source of Funds (Amount per Student)** - Public schools in North Carolina operate with funding from local, state and federal sources. The financial support reflected in these numbers includes all expenses concerned with operating schools, including teacher and administrator salaries, textbooks and other educational supplies and materials. Facilities costs are not included.

Local		State		Federal	
District	State Avg.	District	State Avg.	District	State Avg.
\$1,357	\$1,949	\$5,618	\$5,272	\$852	\$802

**Use of Funds** - Education is a labor-intensive enterprise, as reflected in the accompanying chart. Salaries for teachers, principals and other educators are usually the largest expense in school districts. State and federal funds are generally allotted for specific purposes, services or programs.

Salaries	67%
Benefits	17%
Supplies & Materials	10%
Purchased Services	5%
Equipment	1%
Other	1%

## Adequate Yearly Progress (AYP) Results

North Carolina sets target goals that schools must meet to make Adequate Yearly Progress (AYP) under the federal No child Left Behind Act.

This district met 36 out of 54 AYP targets

School that made AYP	Elementary	Middle	High School
District	70%	0%	50%
State	51%	20%	45%

## High Student Performance

**Overall performance of Students in Grade 3 - 8 on ABCs End-of-Grade Tests**  
Percentage of Students' Scores At or Above

	Reading	Math
District	86.4	66.0
State	85.5	66.4

**Years of Teaching Experience** - The percentage of teachers who have taught for 0 - 3 years, 4 - 10 years or over 10 years

	Elementary School			Middle School			High School		
	0-3 Yrs	0-4 Yrs	10+ Yrs	0-3 Yrs	0-4 Yrs	10+ Yrs	0-3 Yrs	0-4 Yrs	10+ Yrs
Dis-trict	14%	28%	58%	14%	28%	58%	15%	25%	60%
State	24%	29%	48%	24%	30%	46%	22%	25%	53%



# Rutherford County Tourism Revenues

(\$ Millions)

- ◆ Domestic Tourism in Rutherford County generated an economic impact of \$131.66 million in 2006. This was a 11.36 percent Increase over 2005.
- ◆ In 2006, Rutherford County ranked 25th in travel impact among North Carolina's 100 Counties.

Year	Revenues \$(Millions)	Change from Previous Year
1991	\$44.56	4.53%
1992	\$46.39	4.11%
1993	\$48.71	5.00%
1994	\$53.50	9.83%
1995	\$59.25	10.75%
1996	\$69.97	18.09%
1997	\$74.25	6.12%
1998	\$82.96	11.73%
1999	\$86.43	4.18%
2000	\$92.86	7.44%
2001	\$90.38	-2.67%
2002	\$94.62	4.69%
2003	\$99.18	4.82%
2004	\$106.71	7.59%
2005	\$118.23	10.80%
2006	\$131.66	11.36%



- ◆ More than 1,250 jobs in Rutherford were directly attributable to travel and tourism.
- ◆ Travel generated a \$20.44 million payroll in 2006.
- ◆ State and local tax revenues from travel to Rutherford County amounted to \$11.94 million. This represents a \$188.93 tax saving to each county resident.
- ◆ Local attractions include Chimney Rock Park, Hickory Nut Falls, Bottomless Pools and Lake Lure all of which provide ample opportunities for rock climbing, hiking, fishing, exploring, boating, swimming and golf.



# Climate Summary

Climate Summary Period: June 2007 - April 2008

	Air Temperature (Degrees Fahrenheit)											
	JUN 07	JUL 07	AUG 07	SEPT 07	OCT 07	NOV 07	DEC 07	JAN 08	FEB 08	MAR 08	APR 08	
Maximum Temp.	88.6	87	97.1	84.4	73.7	63.4	59.9	52.4	59	62.4	66.8	
Minimum Temp.	65.6	67.4	72.7	64.2	55.5	41.4	40.5	34	39.1	40.8	54.3	
Average Temp.	76.8	76.5	84.3	74.7	63.9	52.5	50.3	42.9	48.5	52	60.5	
	Precipitation (inches)											
	JUN 07	JUL 07	AUG 07	SEPT 07	OCT 07	NOV 07	DEC 07	JAN 08	FEB 08	MAR 08	APR 08	
Avg. Mo. Totals	0.13	0.48	0.6	1.2	0.67	0.69	1.87	0.83	1.75	1.27	0.28	
	Relative Humidity (percent)											
	JUN 07	JUL 07	AUG 07	SEPT 07	OCT 07	NOV 07	DEC 07	JAN 08	FEB 08	MAR 08	APR 08	
Average	66	71	60	64	74	59	66	57	61	56	75	
	Wind Speed (mph)											
	JUN 07	JUL 07	AUG 07	SEPT 07	OCT 07	NOV 07	DEC 07	JAN 08	FEB 08	MAR 08	APR 08	
Monthly Avg.	2.9	2.4	2.4	2.4	2.5	2.6	2.9	3.2	3.8	4.4	3.8	



- ◆ Located in the Isothermal Belt, there are 200 frost-free days in the growing season



A climate summary is broken down into max, min, mean, and the average by month of each available parameter. Above are the summaries for the Rutherford County Airport in Rutherfordton, NC.

# Agricultural Statistics



**Total Area in County (Acres) 361,101**  
Census of Agriculture—2002

Number of Farms	653
Total Land in Farms, Acres	67,856
Average Farm Size, Acres	104
Harvested Cropland, Acres	15,238
Average Age of Farmers	58
Average Value of Farm and Buildings	\$258,688
Average Market Value of Machinery & Equipment	\$35,195
Average Farm Production Expenses	\$24,439

<b>2006 Crops Harvested</b>			
Crop	Acres	Yield	Production
Hay, All: Tons	17,500	1.41	24,700
Soybeans: Bu	1,075	38	40,400

<b>Cash Receipts (2005)</b>	
Livestock	\$8,884,000
Crops	\$2,633,000
Government Pay-ments	\$798,000
<b>Total</b>	<b>\$12,315,000</b>

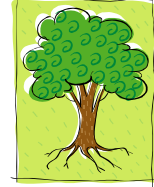
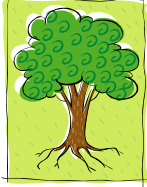
<b>Livestock</b>	
Cattle	9,500
Beef Cows	5,200
Broilers Produced	1,500,000

The North Carolina Department of Agriculture and Consumer Services, in cooperation with the United States Department of Agriculture publishes annual county statistics for selected crops, livestock, poultry, dairy, and cash receipts. Census of Agriculture statistics are published every five years. Counties harvesting less than 15 acres of tobacco, 100 acres of peanuts, and 200 acres of all other crops were not published and are designated by an asterisk (\*). Also not published were counties with fewer than 1,000 hogs or 500 total cattle, 200 beef or milk cows, 500,000 broilers or turkeys, or 50,000 other chickens.

# Rutherford County Forestry Facts

County Ranger -

Assistant County Ranger - Doug Thompson



## Location

The Rutherford County office is located on Airport Road. Take Highway 64 East out of Rutherfordton to Oscar Justice Road. Follow Oscar Justice Road to Airport Road.

## Contact Information

**Mail:** County Ranger - Doug Thompson  
519 Airport Road  
Rutherfordton, NC 28139

**Phone:** Voice: 828-286-9201  
Fax: 828-286-1174

**E-mail:** [rutherford.dfr@ncmail.net](mailto:rutherford.dfr@ncmail.net)

**Web:** [www.dfr.state.nc.us/contacts/rutherford.htm](http://www.dfr.state.nc.us/contacts/rutherford.htm)



## Rutherford County Forest

Total acres in county: 361,110*	Total forest land in county: 235,100*
---------------------------------	---------------------------------------

ry Facts

\* Forest Statistics for North Carolina, 2002

Area of Timberland by Ownership Class * (Acres)					
All Ownership	Federal Gov.	State Gov.	County & Municipal	Forest Industry	Private Ownership
235,100	0	12,900	0	6,500	215,700

# Data Resources

---

---

## **POPULATION**

U.S. Department of Commerce, Bureau of the Census, Washington, DC  
[www.census.gov](http://www.census.gov)

North Carolina State Data Center, Raleigh, NC: [www.census.state.nc.us](http://www.census.state.nc.us)

## **RETAIL SALES**

U.S. Department of Commerce, Bureau of Economic Analysis, Washington, DC  
[www.bea.doc.gov](http://www.bea.doc.gov)

North Carolina State Data Center, Raleigh, NC : [www.census.state.nc.us](http://www.census.state.nc.us)

## **EDUCATION**

*NC Statistical Profile* – State Board of Education, Department of Public Instruction, Raleigh, NC: [www.ncpublicschools.org](http://www.ncpublicschools.org)

## **ECONOMIC & TOURISM**

*State Sales and Use Tax Statistics* – NC Department of Revenue, Sales and Use Tax Division: [www.dor.state.nc.us](http://www.dor.state.nc.us)

*Economic Impact/Tourism Research* – NC Department of Commerce, Division of Tourism: [www.nccommerce.com](http://www.nccommerce.com)

Employment Security Commission of NC, Labor Market Information Division, Raleigh, NC: [www.ncesc.com](http://www.ncesc.com)

North Carolina Department of Revenue, Raleigh NC: [www.dor.state.nc](http://www.dor.state.nc)

## **LAND CLASSIFICATION & USAGE**

*Forest Statistics for North Carolina* – USDA, Forest Service, Southeastern Forest Experiment Station, Asheville, NC: [www.fs.fed.us](http://www.fs.fed.us)

# Data Resources

---

---

## **PROPERTY TAX RATES**

*Property Tax Rates* – Rutherford County Tax Office,  
Rutherfordton, NC. 828-287-6180

<http://www.rutherfordcountync.gov/>

## **CLIMATE**

Southeastern Climate Center; [sercc@dnr.state.sc.us](mailto:sercc@dnr.state.sc.us)  
National Weather Service; [www.erh.noaa.gov](http://www.erh.noaa.gov)  
State Climate Office NC; [www.nc-climate.ncsu.edu/cronos](http://www.nc-climate.ncsu.edu/cronos)

## **FORESTRY & AGRICULTURAL STATISTICS**

Division of Forest Resources  
[www.dfr.state.nc.us](http://www.dfr.state.nc.us)  
NC Department of Agriculture & Consumer Services  
[www.ncagr.com](http://www.ncagr.com)

## **BUSINESS PATTERNS**

County Business Patterns, North Carolina, *Bureau of the Census*  
[www.census.gov](http://www.census.gov)

## **HEALTH PROFESSIONALS**

Active Health Professionals, The Cecil G. Sheps Center for Health Services Research  
[www.shepscenter.unc.edu](http://www.shepscenter.unc.edu)

## **COUNTY PROFILE**

County Profile, Economic Development Information System - A Service of the North  
Carolina Dept. of Commerce  
<http://cmedis.commerce.state.nc.us>